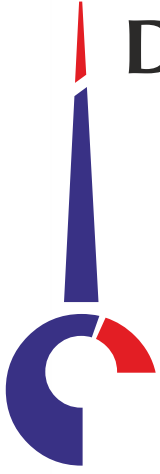


DANTAL HYDRAULICS PVT. LTD.

Total Solutions in Hydraulics



About US



- Established in year 1990
- Leading manufacturer of Hydraulic Cylinders & Systems in India
- Supplying Half a Million cylinders a year. Working towards Million Cylinders a year
- Global OEM Customer base
- Manufacturing Plants – 5
- Products
 - Hydraulic Cylinders
 - Hydraulic Systems
 - Manifold Block assemblies

HYDRAULIC CYLINDERS PRODUCT RANGE

CYLINDERS-

- Welded construction.
- Tie Rod construction.
- Bolted flange construction.
- Complete range of mounting
- Bore 40 mm to 500 mm
- Stroke up to 11000 mm



SPECIAL CYLINDERS

- Hydro-gas suspension cylinders for heavy vehicles
- Multistage double acting Telescopic Cylinders
- Cylinders for -40° C Ambient Temperature
- Cylinders with position sensors and integrated valves.

CERTIFICATIONS



TABLE OF CONTENT

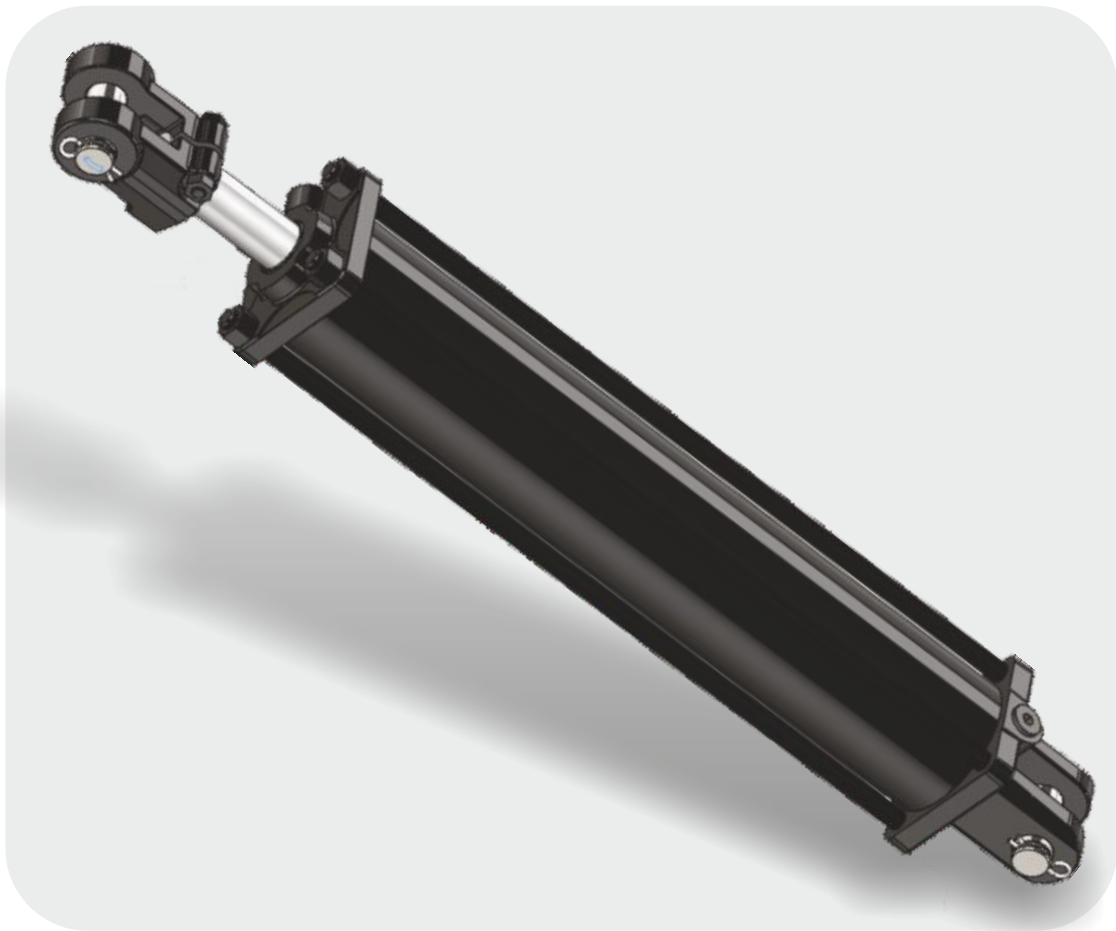
TIE ROD TYPE HYDRAULIC CYLINDERS

- **FEATURES & SPECIFICATIONS** – **PAGE 4 - 5**
- **PRODUCT RANGE TABLE** – **PAGE 6 - 9**
- **ORDERING INFORMATION** – **PAGE 10**
- **CONTACT DETAILS** – **PAGE 11**



FEATURES & SPECIFICATIONS

Tie-Rod Cylinders
Customized & Stocked 3000 PSI
Tie-Rod Cylinders with Clevis Mounts

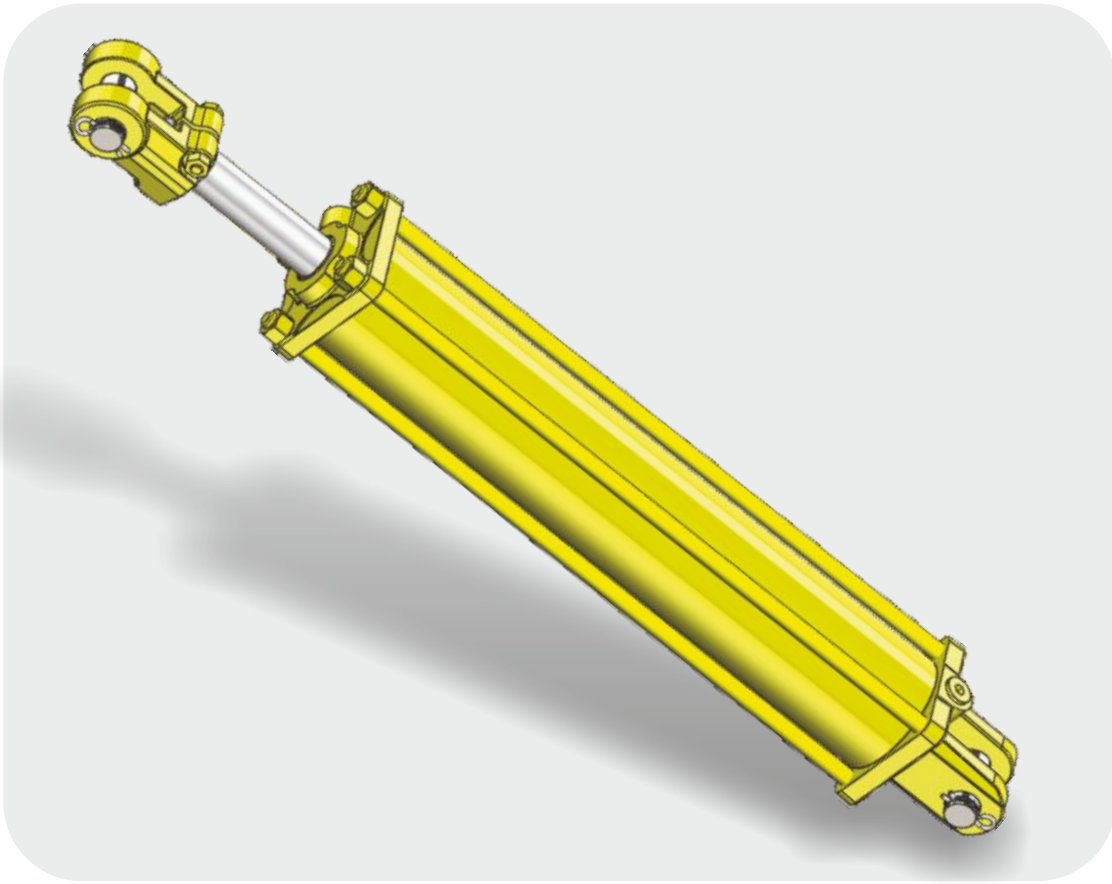


FEATURE:

- Double-acting applications only
- 100% hydraulic tested
- Precision-finished skived & burnished Tube
- Superior quality chrome plated rod
- Ports: SAE (NPT OPTIONAL)
- Temp: -40°F to 190°F
- Designed for Agricultural & other applications.
- Painted black

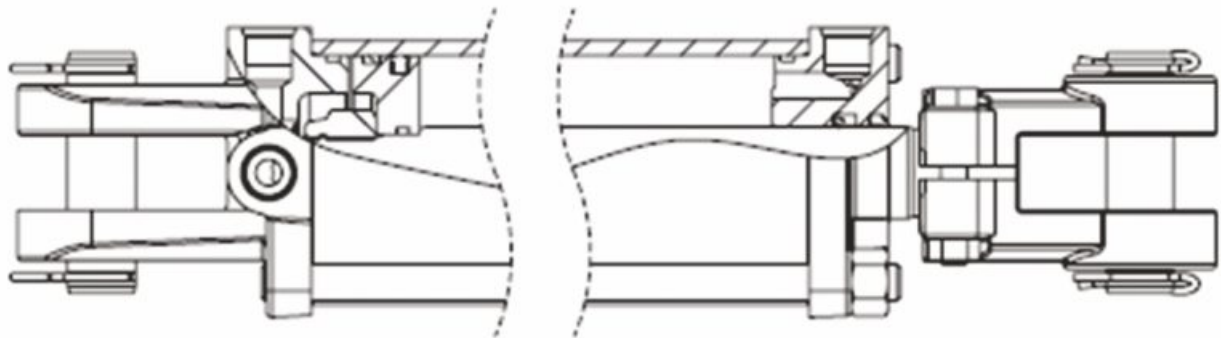


FEATURES & SPECIFICATIONS



No	PART	DESCRIPTION:
1	Cylinder Tube	High tensile cold drawn, skived & burnished.
2	Piston Rod	High tensile En8D hard chrome plated Rod
3	Gland/Piston	Ductile iron
4	Rear Clevis/Front Clevis	Ductile iron
5	Piston Nut	Grade 8
6	Clevis Pin & Clip	Pin & Pin clip: High tensile zinc plated.
7	Pin & Pin clip:	High tensile zinc plated.
8	Clevis Bolt	Grade 12.9
9	Clevis Nut/Tie Rod Nut	Grade 10
10	Tie-Rod	High tensile steel tie rods
11	Piston Seal	Hallite 755 or Equivalent
12	Piston ID seal:	O-ring NBR
13	Gland & End cap OD seal	O-ring NBR+Back up ring
14	Rod Seal	Double lip Polyurethane.
15	Wiper Seal	Single lip Polyurethane.
16	Port	Standard SAE (NPT available on request)
17	Paint	Glossy Black (Std), Red/Yellow (Optional)

Hydraulic Cylinders Installation Dimensions

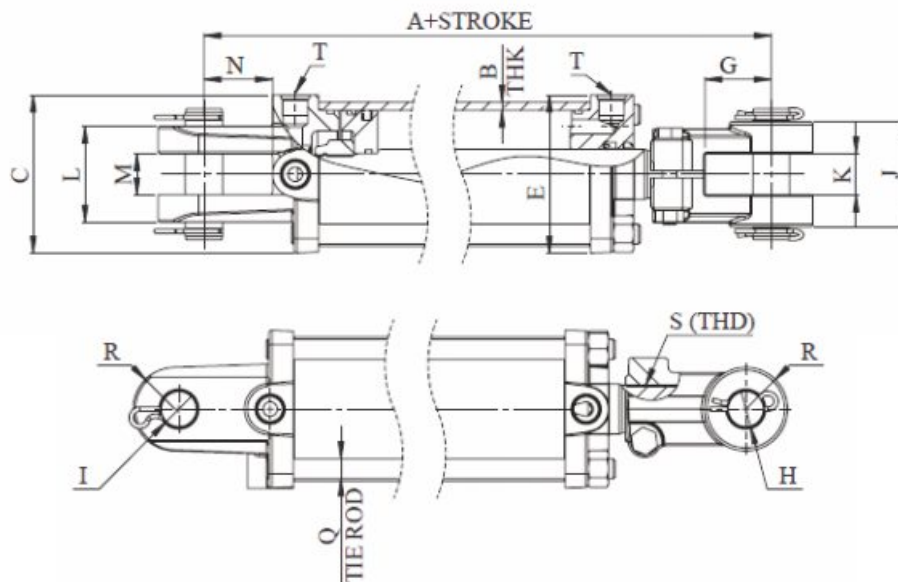


Dimensional Data in Inches:

Bore	A	B	C	E	G	H	I	J	K	L	M	N	Q	R	S	T
2.00	10.25	0.181	2.795	2.795	2.125	1.015	1.015	2.5	1.165	2.5	1.165	2.0	0.393	1.00	1.1/18 -12 UNF	3/4-16 UNF

PART NO	STROKE	ROD DIA	RETRACTED	COLUMN LOAD(lbs)	PIN DIA	SHIP WT.
DC.....	4	1.125	14.25	9244	1	15
DC.....	6	1.125	16.25	9244	1	16
DC.....	8	1.125	18.25	9244	1	18
DC.....	8 ASAE	1.125	20.25	9244	1	18
DC.....	10	1.125	20.25	9244	1	19
DC.....	12	1.125	22.25	9244	1	21
DC.....	14	1.125	24.25	9244	1	22
DC.....	16	1.125	26.25	9244	1	24
DC.....	16 ASAE	1.125	31.5	9244	1	24
DC.....	18	1.125	28.25	9244	1	25
DC.....	20	1.125	30.25	7815	1	27
DC.....	24	1.125	34.25	6700	1	30
DC.....	30	1.125	40.25	4690	1	34
DS.....	SEAL KIT	1.125				

Hydraulic Cylinders Installation Dimensions

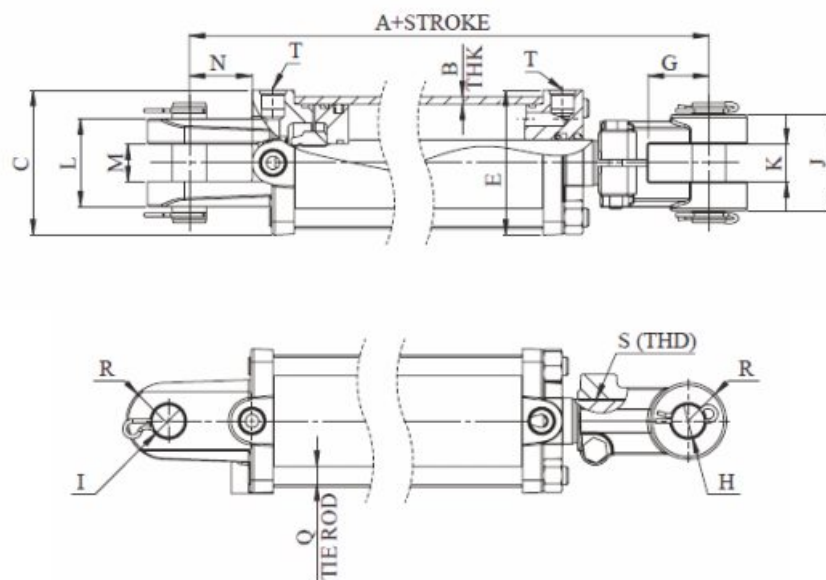


Dimensional Data in Inches:

Bore	A	B	C	E	G	H	I	J	K	L	M	N	Q	R	S	T
2.50	10.25	0.187	3.5	3.5	2.125	1.015	1.015	2.5	1.125	2.5	1.125	2.0	0.393	1.00	1.1/18 -12 UNF	3/4-16 UNF

PART NO	STROKE	ROD DIA	RETRACTED	COLUMN LOAD(lbs)	PIN DIA	WT.
DC.....	6	1.25	16.25	14400	1	22
DC.....	8	1.25	18.25	14400	1	25
DC.....	8 ASAE	1.25	20.25	14400	1	25
DC.....	10	1.25	20.25	14400	1	26
DC.....	12	1.25	22.25	14400	1	28
DC.....	14	1.25	24.25	14400	1	30
DC.....	16	1.25	26.25	14400	1	32
DC.....	16	1.25	31.5	12200	1	34
DC.....	18	1.25	28.25	13600	1	34
DC.....	20	1.25	30.25	11800	1	36
DC.....	24	1.25	34.25	8700	1	41
DC.....	30	1.25	40.25	5900	1	47
DS.....	SEAL KIT	1.25				

Hydraulic Cylinders Installation Dimensions

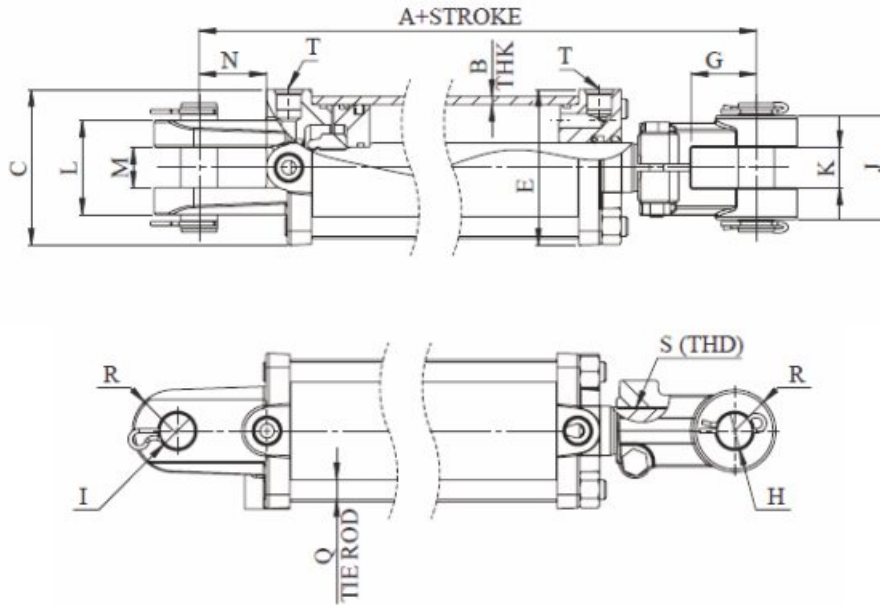


Dimensional Data in Inches:

Bore	A	B	C	E	G	H	I	J	K	L	M	N	Q	R	S	T
3.00	10.25	0.173	3.78	3.78	2.125	1.015	1.015	2.71	1.165	2.55	1.165	2.0	0.472	1.00	1.1/4-12 UNF	3/4-16 UNF

PART NO	STROKE	ROD DIA	RETRACTED	COLUMN LOAD(lbs)	PIN DIA	WT.
DC.....	6	1.375	16.25	20800	1	25
DC.....	8	1.375	18.25	20800	1	28
DC.....	8 ASAE	1.375	20.25	20800	1	28
DC.....	10	1.375	20.25	20800	1	29
DC.....	12	1.375	22.25	20800	1	32
DC.....	14	1.375	24.25	20800	1	34
DC.....	16	1.375	26.25	20800	1	38
DC.....	16 ASAE	1.375	31.5	20800	1	39
DC.....	18	1.375	28.25	20300	1	39
DC.....	20	1.375	30.25	18100	1	41
DC.....	24	1.375	34.25	13500	1	46
DC.....	30	1.375	40.25	9350	1	53
DC.....	36	1.375	46.25	6800	1	60
DC.....	48	1.375	58.25	4070	1	74
DS.....	SEAL KIT	1.375				

Hydraulic Cylinders Installation Dimensions



Dimensional Data in Inches:

Bore	A	B	C	E	G	H	I	J	K	L	M	N	Q	R	S	T
3.50	10.25	0.218	4.33	4.33	1.81	1.015	1.015	2.87	1.125	2.62	1.125	1.87	0.551	1.00	1.5/16-12 UNF	3/4-16 UNF

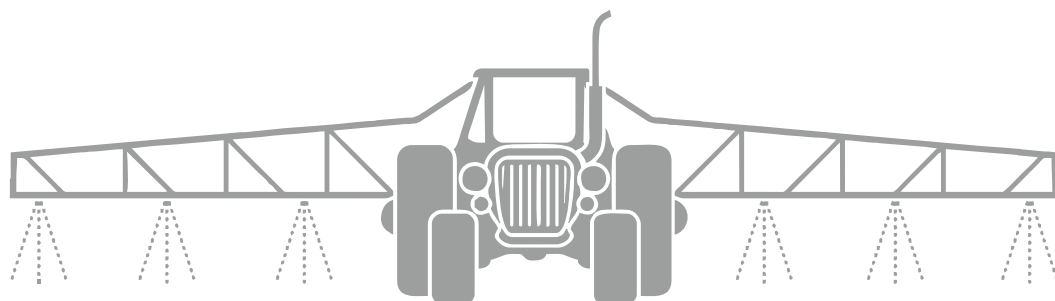
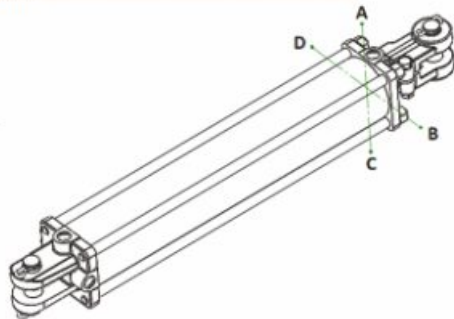
PART NO	STROKE	ROD DIA	RETRACTED	COLUMN LOAD(lbs)	PIN DIA	WT.
DC.....	6	1.375	16.25	28300	1	30
DC.....	8	1.375	18.25	28300	1	36
DC.....	8 ASAE	1.375	20.25	28300	1	36
DC.....	10	1.375	20.25	28300	1	38
DC.....	12	1.375	22.25	28300	1	40
DC.....	14	1.375	24.25	28300	1	43
DC.....	16	1.375	26.25	28300	1	46
DC.....	16 ASAE	1.375	31.5	28300	1	47
DC.....	18	1.375	28.25	21800	1	48
DC.....	20	1.375	30.25	18400	1	50
DC.....	24	1.375	34.25	13600	1	55
DC.....	30	1.375	40.25	9300	1	63
DC.....	36	1.375	46.25	6800	1	70
DC.....	48	1.375	58.25	4100	1	86
DS.....	SEAL KIT	1.375				

ORDERING INFORMATION

For Ordering please fill below form and inform quantity required and email to info@dantal.in

	DC	20	1000	4	A	A	B
MODEL	DC	20	1125	4	A	A	Y
	PAINT						
	B BLACK (STANDARD)						
	R RED						
	Y YELLOW						
BORE							
20	2"						
25	2.5"						
30	3.0"						
35	3.5"						
ROD							
1125	1.125"						
1250	1.25"						
1375	1.375"						
1375	1.375"						
STROKE							
4	2"						
6	6"						
8	8"						
10	10"						
GLAND PORT POSITIONS							
A	TOP						
B	RIGHT						
C	BOTTOM						
D	LEFT						

PORT TYP							
			2	2.5	3	3.5	4
A	ORB 3/4"-16 SAE #8	S	S	S	S	S	S
B	NPTF 3/8	O	O	O	O	O	O
C	NPTF 1/2	O	O	O	O	O	O



MANUFACTURING FACILITIES

Manesar Works : Cylinders



Manesar Works : Rod processing



Ghiloth Works : Special Cylinders



Bilaspur Works : Manifolds & Cylinders



Dantal International Sales offices



HEAD OFFICE:

No. 24, Udyog Vihar, Phase-IV
Gurgaon, Haryana-122 015 (India)
Phone No.: +91-124-4586800
E-mail: info@dantal.in, dantal6@dantal.in

MANESAR WORKS:

Plot No. 50, Sector-3, IMT Manesar
Gurgaon, Haryana-122050 (India)
Phone No.: +91-124-4581800
E-mail: info@dantal.in, dantal6@dantal.in

info@dantal.in

www.dantal.in